

INTERIOR DESIGN SOPHOMORE PORTFOLIO

Chaya Vogel



3D Floor Plan Rendering
Marker and colored pencil on Bristol
11 x 17 in.

Content

- Information Kiosk
- Restaurant Design
- SketchUp Modeling
- AutoCAD Construction Document Set
- Cottage Project
- Sustainable Design
- Building Codes Analysis
- Color Harmonies
- Photoshop and Illustrator
- Airbnb Staging Project



Office Method Perspective
Marker and colored pencil on tracing paper

Survey of Interior Design Information Kiosk

Design Concept

The informational kiosk for Habitat for Humanity will consist of a wooden structure to create a rustic look. Panels of sustainable wood will contribute to the feeling of seeing both inside and out, suggesting unity within the kiosk. All these elements will join to portray a warm and eco friendly structure that feels inviting.

Project Goals and Objectives

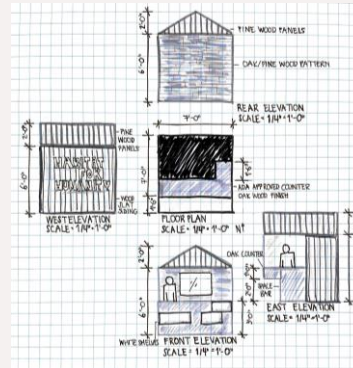
- Mobility. To create a structure that will allow the kiosk to be easily transported.
- Sustainability. To incorporate environmentally friendly materials to increase the appeal to passersby.
- Ergonomics. To include objects within the kiosk designed with the user's safety and comfort in mind.



Concept Image
Photography by Tamas Bujnovszky



Information Kiosk - Axonometric SketchUp



Elevations
Pen and marker on grid paper



Information Kiosk - Axonometric SketchUp

Revit Restaurant Renderings

Below are digital renderings created in Revit, illustrating the completion of a restaurant design project. A construction document set was first created, including furniture plans, elevations, sections and details. As demonstrated below, materials were added, along with accessories to produce the final look.



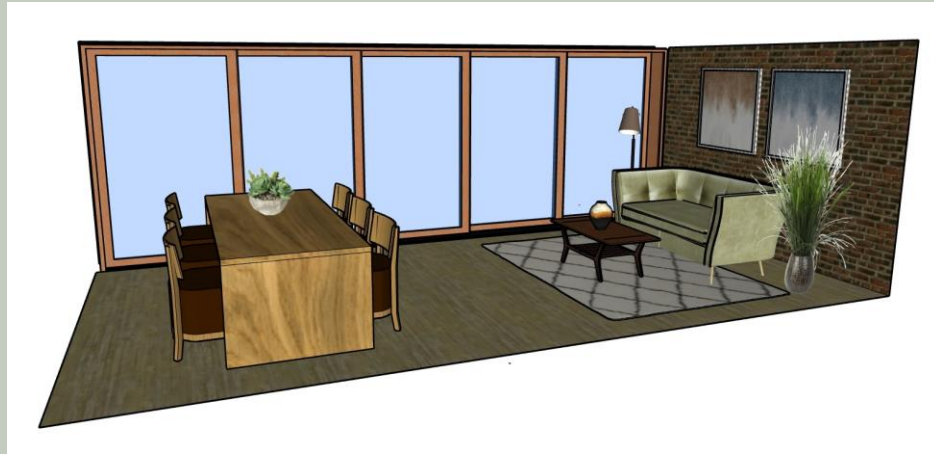
Rendered Floor Plan
Revit



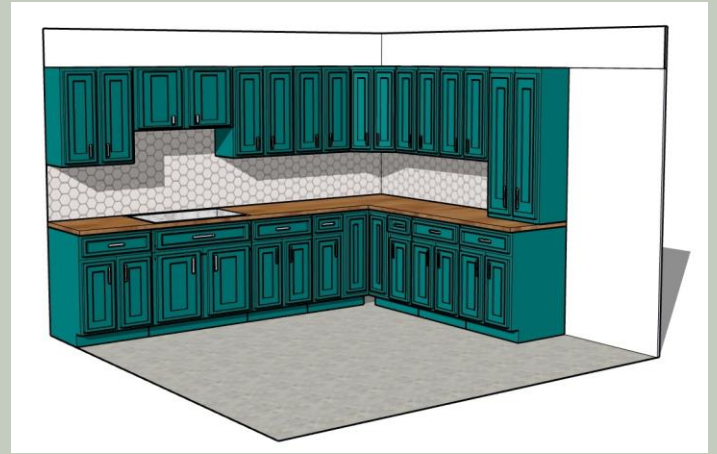
Perspective of Bar/Lounge
Revit

Architectural Perspective and Rendering SketchUp Modeling

Both models were created in SketchUp. The first one illustrates a living and dining room interior, showcasing furniture and accessories from the 3D Warehouse. The second model features a kitchen composed of cabinets that were modeled in SketchUp and then made unique through the component tool.



Living and Dining Room Interior
SketchUp



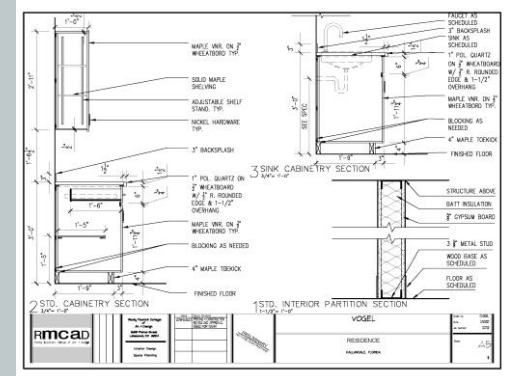
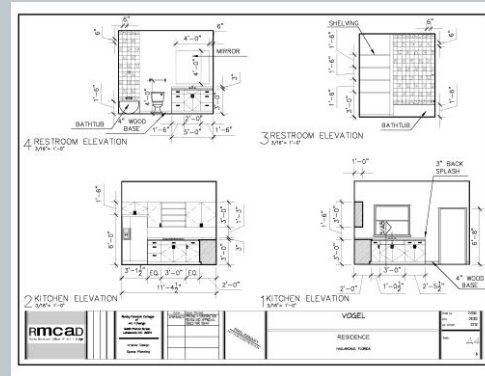
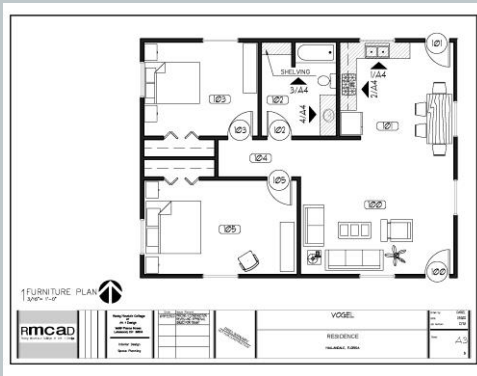
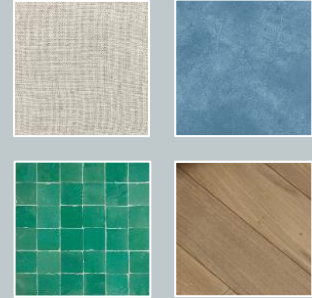
Kitchen Model
SketchUp

Intro to AutoCAD Construction Document Set

ROOM FINISH SCHEDULE												
NO.	NAME	FLOOR	WALLS					CEILING	REMARKS			
			NORTH	EAST	SOUTH	WEST	CEILING					
101	LIVING ROOM	1st	1/2" W.P.	1/2" W.P.	1/2" W.P.	1/2" W.P.	1/2" W.P.	1/2" W.P.	1/2" W.P.	1/2" W.P.	1/2" W.P.	1/2" W.P.
102	KITCHEN	1st	1/2" W.P.	1/2" W.P.	1/2" W.P.	1/2" W.P.	1/2" W.P.	1/2" W.P.	1/2" W.P.	1/2" W.P.	1/2" W.P.	1/2" W.P.
103	BEDROOM 1	1st	1/2" W.P.	1/2" W.P.	1/2" W.P.	1/2" W.P.	1/2" W.P.	1/2" W.P.	1/2" W.P.	1/2" W.P.	1/2" W.P.	1/2" W.P.
104	BEDROOM 2	1st	1/2" W.P.	1/2" W.P.	1/2" W.P.	1/2" W.P.	1/2" W.P.	1/2" W.P.	1/2" W.P.	1/2" W.P.	1/2" W.P.	1/2" W.P.
105	BATHROOM	1st	1/2" W.P.	1/2" W.P.	1/2" W.P.	1/2" W.P.	1/2" W.P.	1/2" W.P.	1/2" W.P.	1/2" W.P.	1/2" W.P.	1/2" W.P.

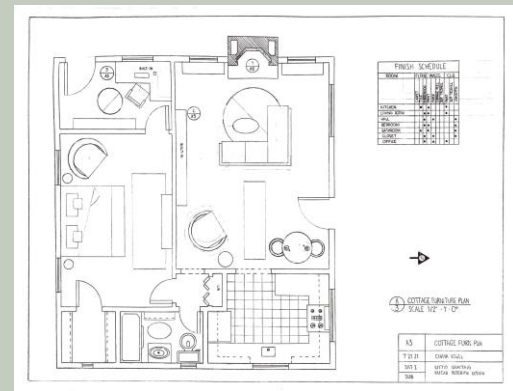
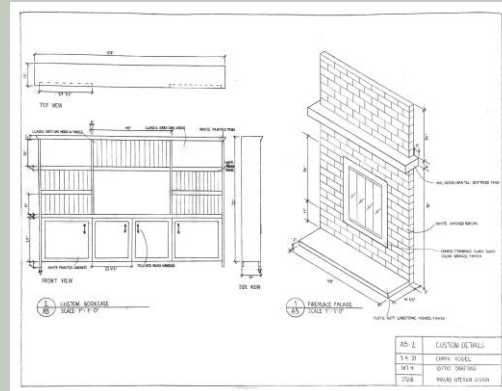
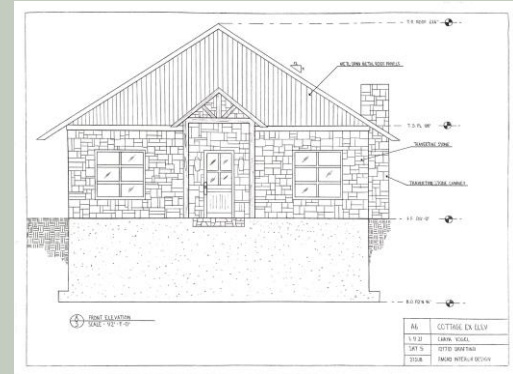
DOOR SCHEDULE												
NO.	DOOR	TYPE	SWEPT	FINISH	HOLDING	HOLDING	HOLDING	HOLDING	HOLDING	HOLDING	HOLDING	REMARKS
101	101	101	101	101	101	101	101	101	101	101	101	101
102	102	102	102	102	102	102	102	102	102	102	102	102
103	103	103	103	103	103	103	103	103	103	103	103	103
104	104	104	104	104	104	104	104	104	104	104	104	104
105	105	105	105	105	105	105	105	105	105	105	105	105

The images below are a construction document set, complete with a floor and furniture plan, a door and room finish schedule, elevations, and detailed drawings. This project was for a two-bedroom residence for a couple. All construction documents were drafted in AutoCAD.



Drafting Cottage Project

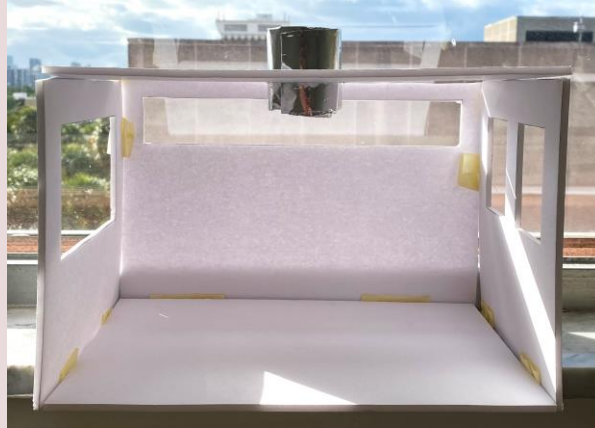
The cottage project required designing a residential home with an open floor plan. All drawings were created on vellum with mechanical pencils. Starting with a floor plan, elevations were then developed along with custom furniture. The final step was an exterior drawing of the cottage.



Intro to Sustainable Design

Daylighting Model

The daylighting model consisted of building a 3D model from foam core board to experiment with sustainable daylighting techniques. These included a clerestory window, and a solar tube. Observations were noted, such as how much sunlight entered the model, and the various shadows created.



Intro to Sustainable Design

Biomimicry Conceptual Design

Design Concept

The concept behind my umbrella design is inspired by the scientific process of evapotranspiration that occurs in plants.

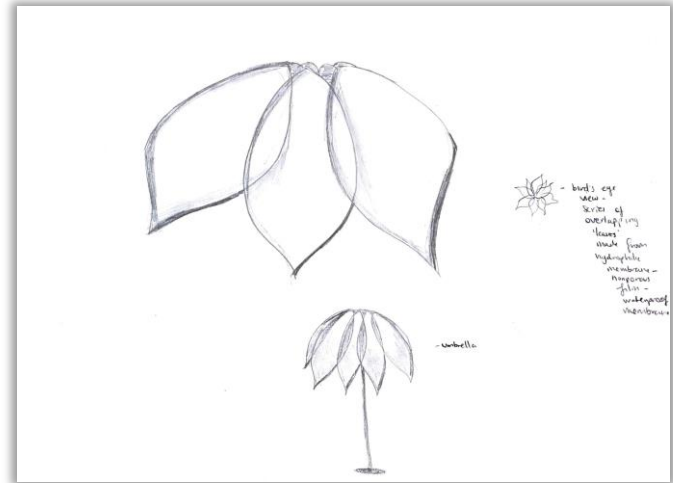
Evapotranspiration inspired my design which uses membrane, a nonporous material that has the same qualities as a leaf to evaporate water.



Concept Image
All Terrain Landscaping

Biomimicry Design

In my umbrella design, each layer will be shaped like a leaf. A series of “leaves” will be placed overlapping one another to create a circle, held up by a wooden pole and base. Each “leaf” will be made from hydrophilic membrane, designed to absorb the water molecules and then diffuse the water vapor.

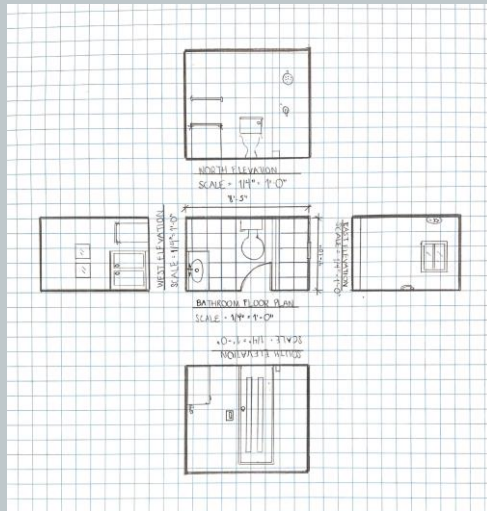


Concept Sketch
Pencil

Building Codes and Regulations

Kitchen and Bath Analysis

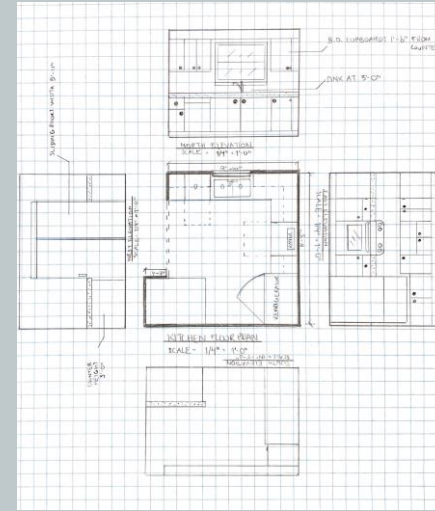
This project involved documenting the existing conditions of my personal kitchen and bathroom and suggesting how they could be made accessible according to FHA guidelines. Some potential modifications included changing the kitchen knobs to bar pulls. A modification for the bathroom was to switch the porcelain tile flooring to a matt finish tile.



Bathroom Floor Plan and Elevations
Pencil on grid paper



Bathroom
Photograph

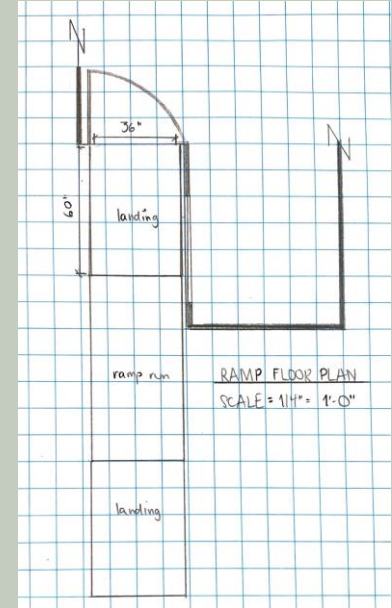
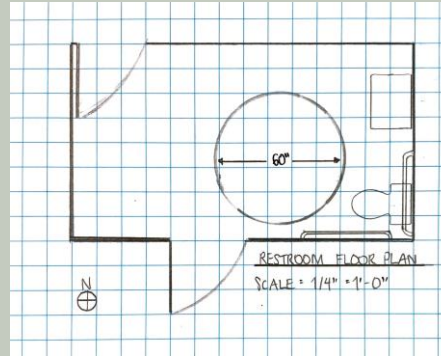
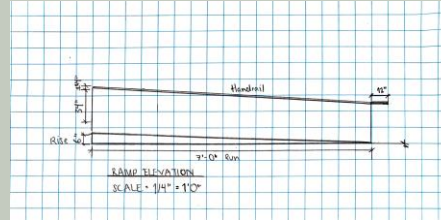
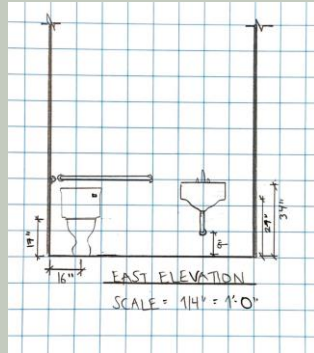
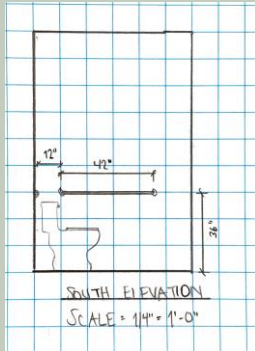


Kitchen Floor Plan and Elevations
Pencil on grid paper

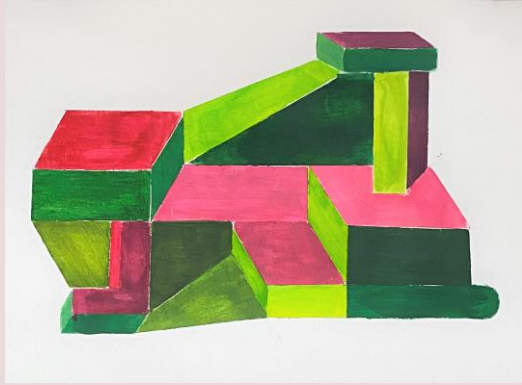
Building Codes and Regulations

Adaptive Reuse Analysis

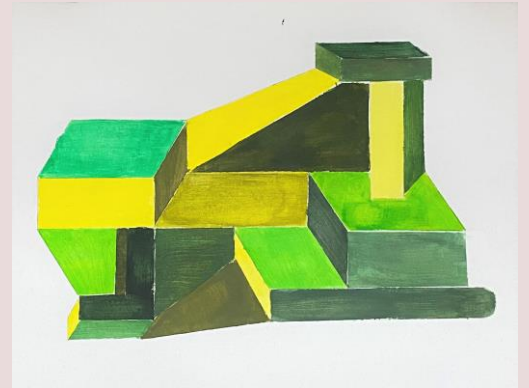
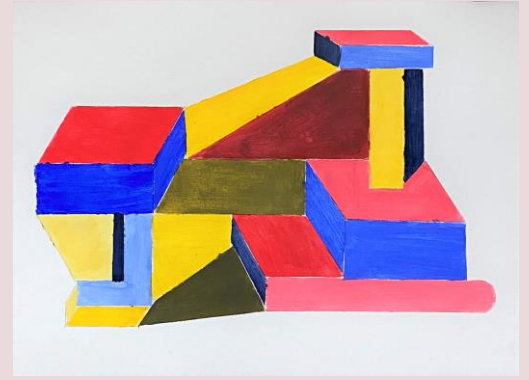
The Adaptive Reuse Analysis required choosing an existing historic building and designing a new code compliant public restroom as well as a new code compliant ramp with handrails. The images below were all hand drafted to scale using mechanical pencils on grid paper.



Topics in Color Color Harmonies



This project experimented with four color harmonies: complementary harmony, split complementary, analogous, and triadic. Each drawing used the same outline, but with different hues according to the chosen color harmony. All paintings were created with acrylic on Bristol paper.



2D Design Elements and Principles

The three projects below experiment with various 2D design programs, such as Photoshop and Illustrator.

Special Effects Project
Photoshop



Notan in Negative Space
Illustrator



Digital Still Life
Photoshop



Airbnb Staging Project

This Airbnb staging project was for a vacation rental company. The images below are professional pictures taken by Miami Real Estate Photographers. It is a two bedroom, one bathroom apartment currently listed on Airbnb, located in Miami, Florida. First, a floor plan and moodboard were created before the whole project came together.



Queen Bedroom



Living Area



King Bedroom

Thanks!

Be in touch!

You can find me at:

- **Email:** chaya.vogel@rmcad.edu
- **LinkedIn:**
<https://www.linkedin.com/in/mushka-vogel-2366a81a5/>



The Coral Room, London - Rendering
Marker and colored pencil on Bristol